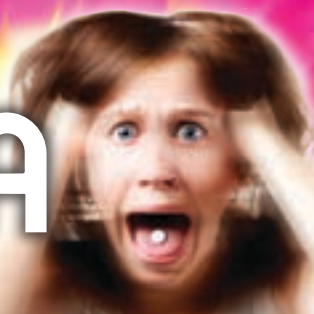


# ECSTASY MDMA MOLLY



MDMA, also known as Ecstasy and Molly, is a synthetic drug that's also known as a "club drug" because of its popularity at night clubs as well as music festivals and concerts. It produces both stimulant and psychedelic effects. Although a drug known as "Ecstasy" may sound like it's harmless, the truth is that this drug is anything but.

## STREET NAMES

In addition to Ecstasy and Molly, MDMA may also be called:

**EXTC** **LOVE DRUG** **HUG DRUG**  
**EX** **ADAM BEANS**

## WHAT DOES MDMA LOOK LIKE?

MDMA may come in pill, tablet, or capsule form. The pills and tablets come in a variety of colors, usually with some type of picture or design on the pill. Molly, which is the crystalline powder form of MDMA, usually comes in capsules.

## BEWARE OF UNKNOWN INGREDIENTS

Molly is often sold as a "pure" form of MDMA/Ecstasy. But this is misleading. Molly, as well as MDMA pills/tablets, frequently include other drugs like dextromethorphan, caffeine, cocaine, amphetamines, or PCP.

People who buy these drugs have no way of knowing what their ingredients are and put themselves at risk for unanticipated, and potentially deadly consequences.

## HOW DOES IT AFFECT THE BRAIN?

MDMA increases the activity of dopamine, serotonin, and norepinephrine in the brain. It also causes excessive amounts of serotonin to be released, which may result in:



Shivering  
Increased heart rate  
Sweating  
Dilated pupils

## OTHER SIDE EFFECTS

Faintness  
Muscle tension  
Nausea  
Teeth clenching  
High body temperature (which may cause heart, liver, or kidney failure)  
Increased risk of STIs  
Long-lasting brain damage  
Hemorrhaging  
Psychosis



Up to days or weeks after use, the low levels of serotonin in the brain may lead to:



Confusion  
Anxiety  
Sleep problems  
Depression

## PSYCHOLOGICAL EFFECTS

Elevated mood  
Heightened feelings of empathy  
Increased sense of touch  
Hallucinations  
Increased aggression



## IS MDMA ADDICTIVE?

Researchers don't yet know if MDMA is addictive, but it certainly has the potential to be. It is known as a reinforcing drug, which means that its pleasurable properties increase the chances that a person will take it again.

**Users can:**  
Become dependent on the drug.  
Build a tolerance to its effects.  
Experience withdrawal after stopping use.

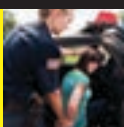


## SIGNS OF OVERDOSE

Seizure  
Vomiting  
Loss of muscle control  
Disorientation  
Delusional thoughts  
Cardiac arrest  
Stroke

## MDMA IS ILLEGAL!

GETTING BUSTED WITH MDMA MEANS THAT YOU WILL LIKELY BE ARRESTED AND FACE JAIL TIME AS WELL AS HEFTY FINES.



**MDMA, ECSTASY, MOLLY - ONE DRUG, DIFFERENT NAMES, SAME DANGER**