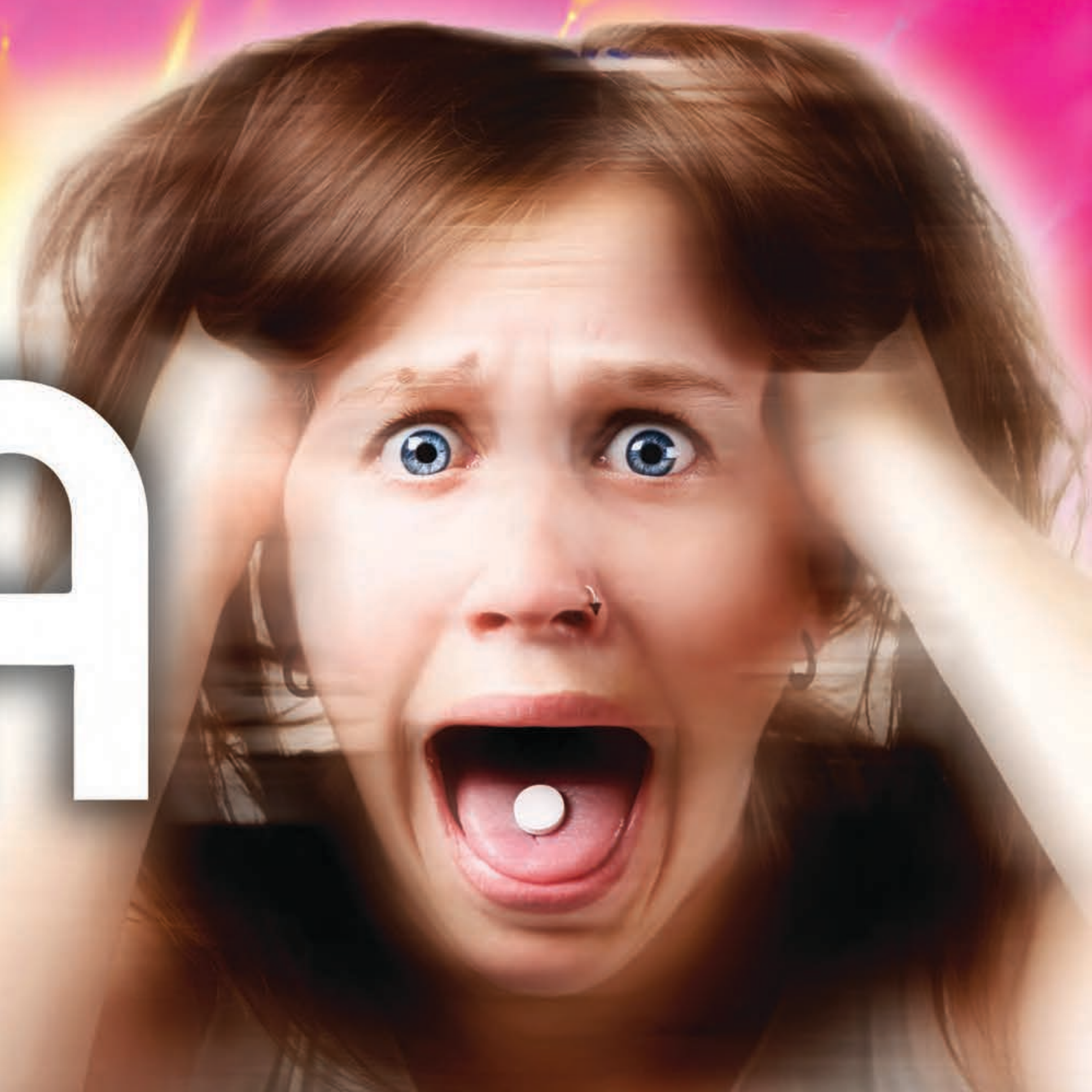


ECSTASY mdma molly



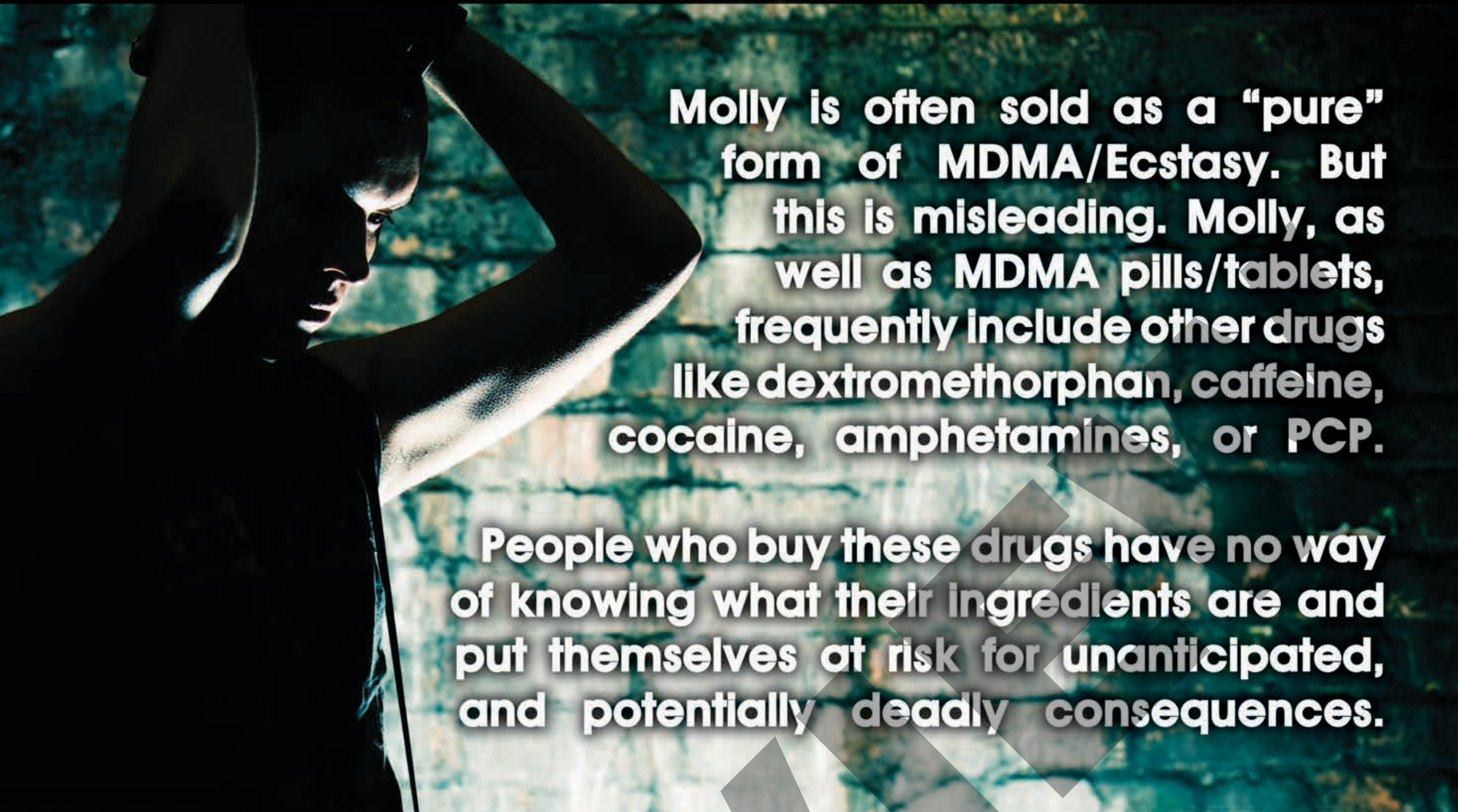
MDMA, also known as Ecstasy and Molly, is a synthetic drug that's also known as a "club drug" because of its popularity at night clubs as well as music festivals and concerts. It produces both stimulant and psychedelic effects. Although a drug known as "Ecstasy" may sound like it's harmless, the truth is that this drug is anything but.

STREET NAMES

In addition to Ecstasy and Molly, MDMA may also be called:

EX **XTC** **LOVE** **HUG**
ADAM **DRUG** **DRUG**
BEANS

BEWARE OF UNKNOWN INGREDIENTS



Molly is often sold as a "pure" form of MDMA/Ecstasy. But this is misleading. Molly, as well as MDMA pills/tablets, frequently include other drugs like dextromethorphan, caffeine, cocaine, amphetamines, or PCP.

People who buy these drugs have no way of knowing what their ingredients are and put themselves at risk for unanticipated, and potentially deadly consequences.

WHAT DOES MDMA LOOK LIKE?

MDMA may come in pill, tablet, or capsule form. The pills and tablets come in a variety of colors, usually with some type of picture or design on the pill. Molly, which is the crystalline powder form of MDMA, usually comes in capsules.



HOW DOES IT AFFECT THE BRAIN?

MDMA increases the activity of dopamine, serotonin, and norepinephrine in the brain. It also causes excessive amounts of serotonin to be released, which may result in:



Shivering
Increased heart rate
Sweating
Dilated pupils



Up to days or weeks after use, the low levels of serotonin in the brain may lead to:



Confusion
Anxiety
Sleep problems
Depression

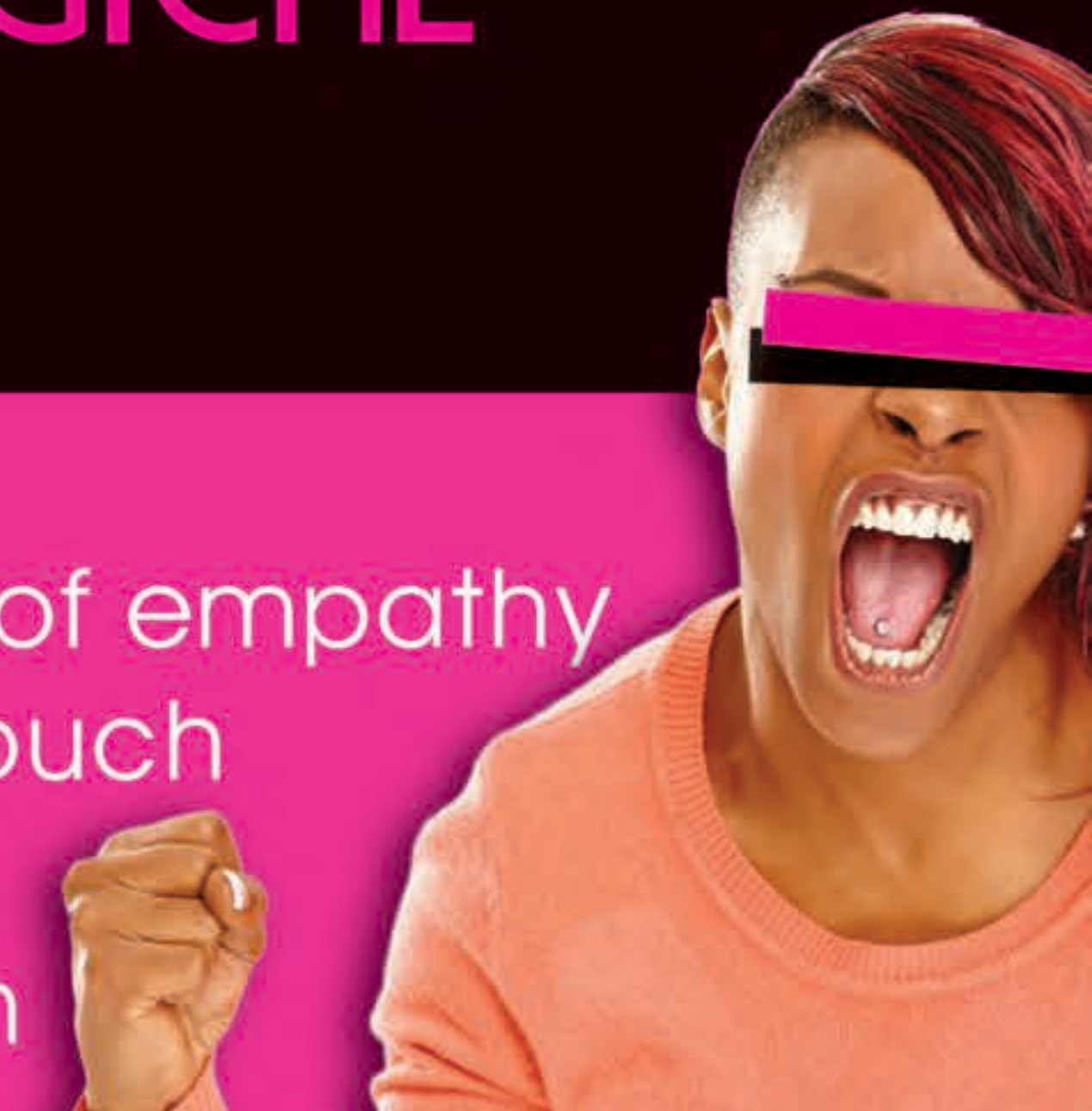
OTHER SIDE EFFECTS

Faintness
Muscle tension
Nausea
Teeth clenching
High body temperature (which may cause heart, liver, or kidney failure)
Increased risk of STIs
Long-lasting brain damage
Hemorrhaging
Psychosis



PSYCHOLOGICAL EFFECTS

Elevated mood
Heightened feelings of empathy
Increased sense of touch
Hallucinations
Increased aggression



IS MDMA ADDICTIVE?

Researchers don't yet know if MDMA is addictive, but it certainly has the potential to be. It is known as a reinforcing drug, which means that its pleasurable properties increase the chances that a person will take it again.

Users can:
Become dependent on the drug.
Build a tolerance to its effects.
Experience withdrawal after stopping use.

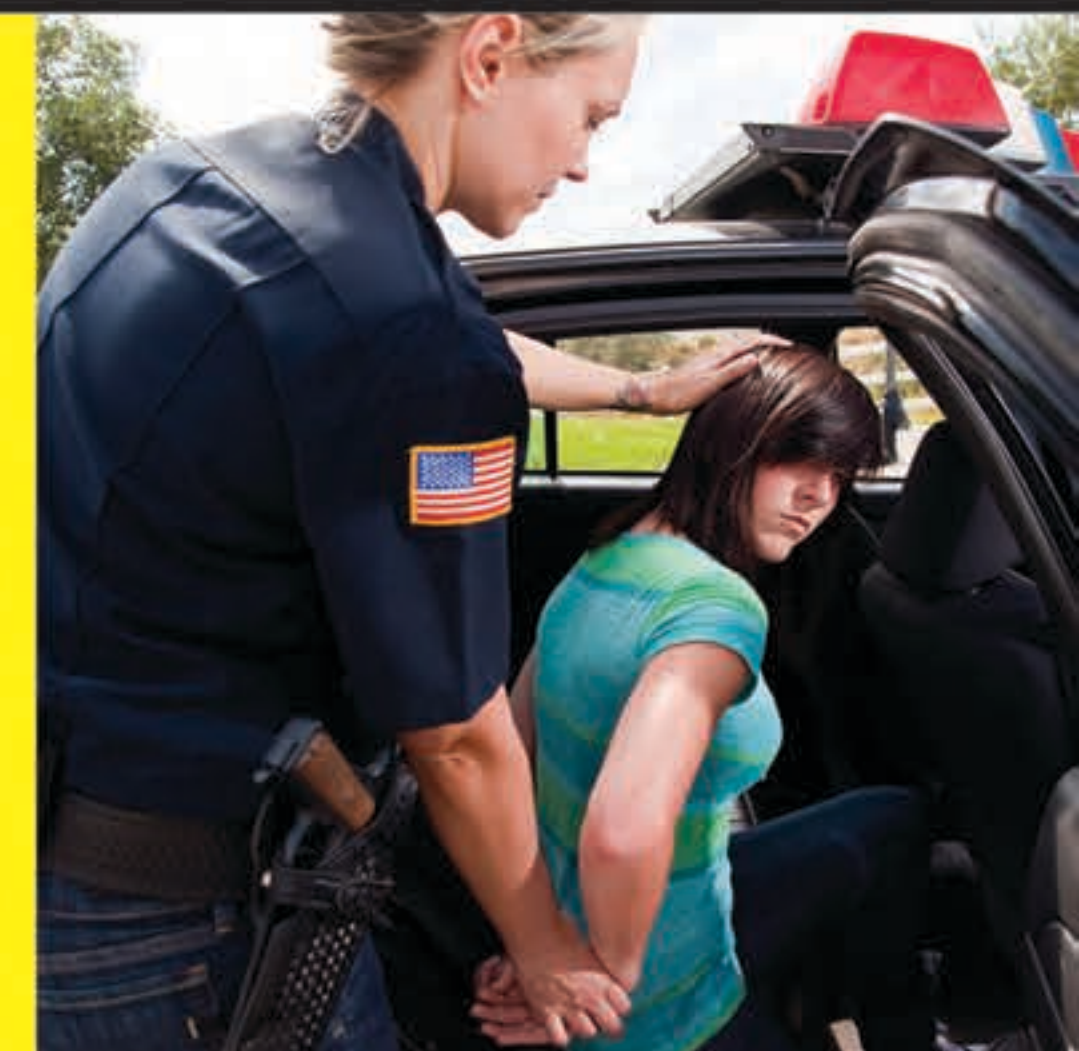


SIGNS OF OVERDOSE

Seizure
Vomiting
Loss of muscle control
Disorientation
Delusional thoughts
Cardiac arrest
Stroke

MDMA IS ILLEGAL!

GETTING BUSTED WITH MDMA MEANS THAT YOU WILL LIKELY BE ARRESTED AND FACE JAIL TIME AS WELL AS HEFTY FINES.



MDMA, ECSTASY, MOLLY - ONE DRUG, DIFFERENT NAMES, SAME DANGER